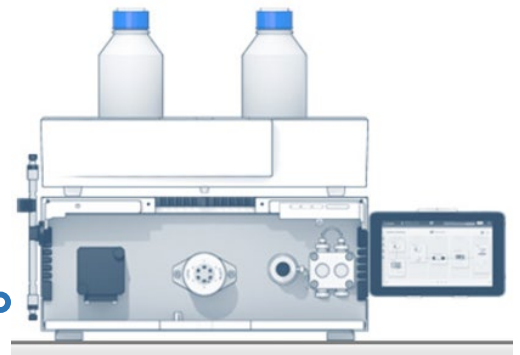




AZURA made in germany

Isocratic HPLC system with variable single wavelength UV/VIS detector and manual injection



The AZURA® HPLC Compact Iso

A small complete analytical isocratic HPLC system. Due to its compact dimensions, the system fits onto every laboratory bench.

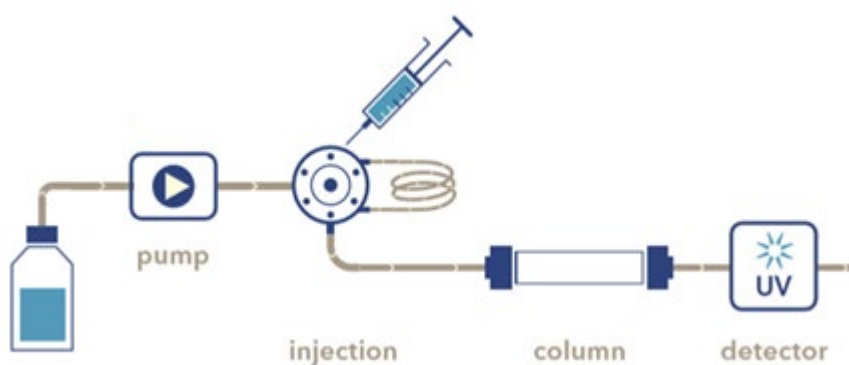
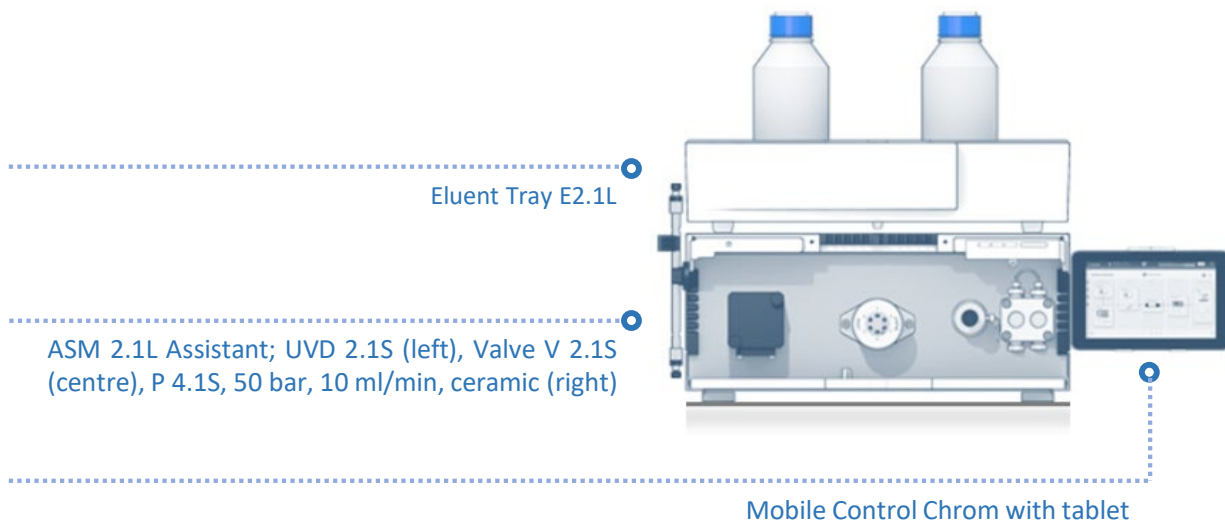
The system is based on the multifunctional AZURA® Assistant ASM 2.1L and contains three integrated modules; an AZURA® Detector UVD 2.1S, an AZURA® Pump P 4.1S and a electric injection valve.

The system comes with an eluent tray for safe storage of up to 6 bottles. The column can be attached anywhere to the system via magnetic clip. A leak sensor and the tubing guidance as well as the Mobile Control unit with touch screen, ensure the safe and user friendly usage. Modern design with completely demountable fronts turn the system into a visual highlight.

Key Features

- Complete isocratic analytical HPLC system that needs very little bench space
- UV/VIS detector with one variable wavelength
- Pump unit with pressure sensor for a low pulsation eluent supply (max. 400 bar)
- Mobile Control Chrom allows direct control and data recording of all integrated modules
- Leakage protection
- Complete software package Mobile Control
- Tubing scheme

Components of the the AZURA® HPLC Compact Iso



The specifications of the major components of the AZURA HPLC Compact Iso are shown in the following pages.

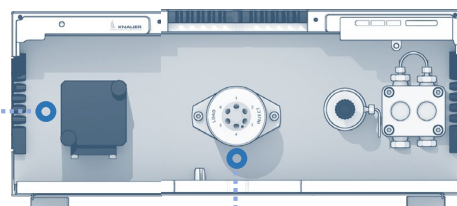
AZURA Assistant ASM 2.1L

Article No. KNA-AYCAEABQ



The Assistant ASM 2.1L is a compact combination module which can be equipped with up to three device modules. Available for selection are valves, pumps, degassers and UV detectors. Depending on the integrated modules the assistant fulfills many different tasks like sample and solvent selection, sample injection, column switching or fraction collection. An assistant including a pump, valve, and detector features a complete, compact chromatographic system. As a part of a larger system, the ASM 2.1L is extremely versatile in analytical, preparative and continuous liquid chromatography. A leak sensor and the capillary guidance, as well as the optional display software Mobile Control, facilitate a safe and user-friendly operation. The concept of the flexible combination of device modules combines the highest functionality with minimal space requirements.

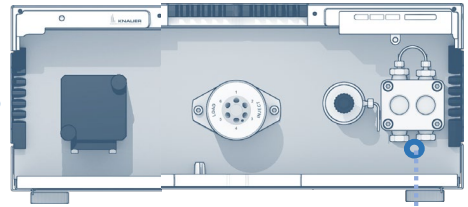
AZURA UV Detector UVD 2.1S	
Detector type	Variable single wavelength UV detector
Detection channels	1
Light source	Deuterium (D ²) lamp with integrated GLP chip
Wavelength range	190 - 500 nm
Spectral bandwidth	13 nm at H _α line (FWHM)
Wavelength accuracy	± 3 nm
Wavelength precision	0.7 nm (ASTM E275-93)
Noise	± 20 µAU at 254 nm (ASTM E1657-98)
Drift	300 µAU/h at 254 nm (ASTM E1657-98)
Linearity	> 2.0 AU at 270 nm (ASTM E1657-98)
Maximum Data Range	50 Hz (LAN)/20 Hz (Analog)/10 Hz (RS-232)
Flow cell	Analytical UV Flow Cell, 10 mm path length, 1/16", 10 µl volume, 300 bar, stainless steel, one sided inlet and outlet
Time constant	0.00 / 0.02 / 0.05 / 0.1 / 0.2 / 0.5 / 1.0 / 2.0 s
Integration time	Automatic



Motorized Valve AZURA V 2.1S	
Function	Column selection, injection
Capillary connection	1/16"
Bore size [mm]	0.6 mm
Thread	10-32 coned
Max. pressure [bar]	300 bar
Max. pressure [psi]	30 Mpa
Maximum flow rate	4350 psi
Port Number	6
Positions	2
Stator Material	Stainless steel
Rotor Material	Vespe ^l
Material	Stainless steel

AZURA Assistant ASM 2.1L (continued)

Article No. KNA-AYCAEABQ



AZURA Pump P 4.1S	
Max. flow rate	10 ml/min
Flow rate range	0.001–10 ml/min
Flow rate increment	0.001
Maximum delivery pressure [bar]	400 bar
Pump head materials	Stainless steel
Maximum viscosity	100 cp
Liquid temperature range	4–60 °C (39.2–140 °F)
Gradient	Isocratic
Wetted materials	GFP (graphite fibre reinforced PTFE), ruby, sapphire, Titanium, PEEK
Note	Pressure sensor membrane made of stainless steel; limited wetting in fluidic path
Best working conditions	0.1–8.0 ml/min
Continuous working continuous	0.1–4.0 ml/min
Flow rate accuracy	± 1%
Flow rate accuracy conditions	5 - 50% of flow range using ethanol/water 10:90
Flow rate precision	≤ 0.5 % RSD
Flow rate precision conditions	measured at 1 ml/min using ethanol/water 10:90
Pump type	Ultra-compact high pressure pump
Pulsation compensation	No
Active piston seal wash	No
Piston seal washing	Yes
System protection	Pmin and Pmax adjustable Imin and Imax adjustable
Pump head inlet (standard)	1/4"-28 UNF (flat bottom)
Pump head outlet (standard)	10–32 UNF (coned)

Analytical UV Flow Cell

10 mm path length, 1/16", 10 µl volume, 300 bar, stainless steel, one sided inlet and outlet
Article No. KNA-A4061XB



Analytical UV Flow Cell

This standard stainless steel analytical UV flow cell is distinguished by its robust and long-life design. The flow cell can be easily dismantled allowing optical components to be cleaned and replaced. This flow cell is compatible with the following KNAUER detectors: AZURA UVD 2.1S, UVD 2.1L and Smartline 200, 2500, 2520 and 2600. The one sided inlet and outlet assure for improved handling, especially for the ASM 2.1L with UVD 2.1S detector.

Analytical UV Flow Cell	
Flow cell type	Analytical UV flow cell
Biocompatible	No
Fibre optics version	No
Capillary connection	1/16"
Wetted materials	stainless steel / quartz (SUPRASIL) / PFA
Path length	10 mm
Flow cell volume	10 µl
Maximum flow rate	20 ml/min
Maximum pressure	300 bar

Mobile Control Chrom with tablet

Article No. KNA-A9608



Display software for AZURA devices with data acquisition, incl. tablet

Intuitive and cost-effective software solution as device display, for device control and basic LC system operation

Mobile Control Chrom is an intuitive and cost-effective software solution for controlling and monitoring your AZURA devices and systems. In addition you can acquire data from AZURA detectors allowing simple measurements. Detector traces, auxiliary traces and method parameters can be recorded, graphically depicted, analyzed, reported and exported at the click of a button. The clear system overview provides instant information on key parameters and system status. Adjust and operate single devices or even whole systems with a few fingertips. The well-structured block programming assists you to clearly and quickly automate device control. A smart user management makes the Mobile Control safe. Device parameters can only be changed by authorized operators. The automated check of GLP data helps you avoid problems and unexpected downtime as well as to plan maintenance controls. With the hand-held Mobile Control option you can check your system remotely, allowing you to oversee multiple systems from the comfort of your office. Alternatively you can install the Mobile Control directly on your Laptop or PC. Free updates enable you to take advantage of new devices and features as soon as they are released with no extra cost. On top of full access to AZURA devices Mobile Control Chrom allows you to acquire data from AZURA detectors.

Take a demo tour with virtual devices or test full features with the 5-day trial option. You will find the software installers at <https://www.knauer.net/en/mobile-control-chrom-with-tablet/p22803>

Mobile Control Chrom with tablet	
Operating system	Windows 10
Software version	Mobile Control v5.5.5, Data Viewer v3.5.5
Fields of application	Display software, device control, basic LC system operation, data acquisition
Supported instruments	Detailed information on request